



# HIRSCHMANN

A **BELDEN** BRAND

## New Product Bulletin

**NP 1013HE**

### **Hirschmann™ Industrial HiVision v4.0**

The essential management tool for all stages of your network life cycle.



### **Introducing Hirschmann™ Industrial HiVision v4.0**

Network visibility equals high availability. Hirschmann™ introduces Industrial HiVision v4.0, the new state-of-the-art software for industrial network management. Turn individual network components into a complete system. Industrial HiVision v4.0 software is ideal for configuring and supervising all Hirschmann™ manageable devices, including switches, routers, EAGLE20 firewalls and BAT wireless devices.

Designed for effective industrial supervision, Hirschmann™ Industrial HiVision v4.0 can be easily integrated into SCADA applications. It offers a built-in SNMP to OPC server. The graphical user interface is available as an ActiveX control. A DTM offers seamless operation inside FDT applications.

#### **Key benefits of v4.0**

- Integration of third-party devices
- Enhanced auto-topology discovery
- MultiConfig™ multiple device simultaneous configuration



## Integration of third-party devices

Network management software from a specific networking device manufacturer is of course optimized for the manufacturer's own devices. Generic network supervision software will never provide the ease of use and the deep level of product integration that can be offered by purpose-built software. But in the real world a network is a multi-vendor environment. And for certain the end devices will be from a multitude of vendors.

Industrial HiVision v4.0 makes it simple for network administrators to integrate any manageable third-party products, no matter whether these are network infrastructure products or end devices. All managed products offer a standard feature set which can be supervised, for example the status of a connection to a device. In addition, options such as device-specific functions, status propagation and long term history can be made available using the standard intuitive interface. You decide the level of supervision detail to suit your own requirements.

### Key benefits

- All manageable devices from any manufacturer can be monitored and trended.
- Industrial HiVision v4.0 shows the status of your complete system.
- Total network supervision can be accomplished with a single network management application.

## Enhanced auto-topology discovery

Precise knowledge of the network topology is absolutely essential in order to be able to monitor industrial networks reliably. The network administrator must know how and where components are connected together in order to manage complex networks and perform maintenance work as necessary.

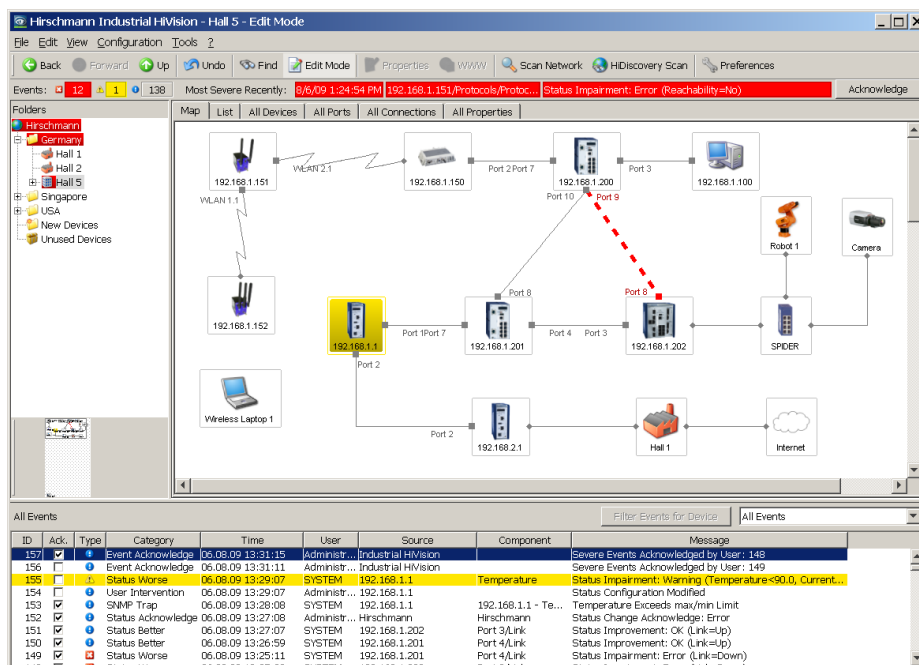
Existing customers are already familiar with the intuitive Industrial HiVision user interface. This allows rapid and effortless visualization of the network topology. The standardized LLDP protocol is used to scan all network infrastructure components and the received information allows Industrial HiVision v4.0 to build a representation of the network connectivity. End devices such as PLCs, I/O, and HMIs are also detected and their location is accurately depicted on the graphical topology map.

Industrial HiVision v4.0 takes this one step further. For the first time the software is able to detect unmanaged switches and hubs and display their position within your network diagram. The software is also able to determine the network topology of devices which are located behind a router. This results in an unprecedented level of topology detail.

Even industrial networks evolve over time, and documentation can easily become out of date. The enhanced auto-topology discovery function ensures that you always know what is connected where in your network.

### Key benefits

- Network maps are created automatically, without manual intervention.
- Topology maps are 100% accurate.
- Network documentation is always up to date.



Industrial HiVision v4.0 graphical user interface



### MultiConfig™ for network installation

It is a fact. Most network infrastructure devices require identical configuration parameters. But those parameters will differ from one network to the next. Which redundancy protocol is required? What is the temperature threshold of the devices? Where is the time server located? Should the web interface be disabled for live operation? To which management station should alarms be sent? Must unused ports be disabled? The list goes on and on.

Whether you are configuring 10 devices, or 1000 devices, the problems are the same. Configuring devices individually is a tedious task. And even worse, a misconfiguration error on a single device can be almost impossible to find. As a result, Site Acceptance Tests will be prolonged or the network may fail during live operation. MultiConfig™ prevents these problems from ever happening.

Not only will MultiConfig™ allow you to configure the same parameters across multiple devices simultaneously, but it will also show you where there is an inconsistency between parameter configurations. It even works across different types of devices, where those devices have parameters in common.

Finally, MultiConfig™ will allow you to save multiple devices configurations, both locally and to a server, without touching each device individually. The perfect end to a network deployment.

### Key benefits

- Reduced network installation time.
- Network infrastructure configuration consistency.
- Expedited network hand-over collateral.

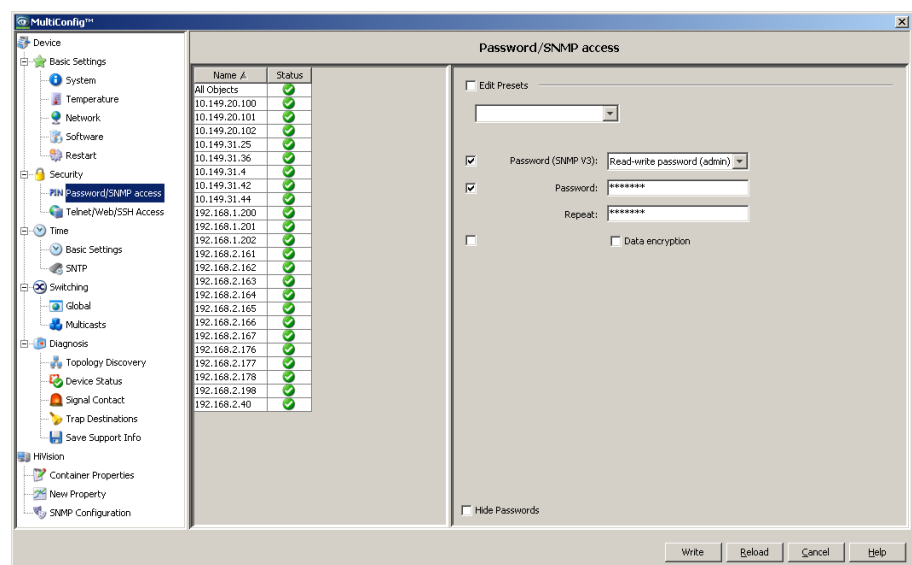
### MultiConfig™ for live operation

Throughout a network's lifetime operation, it is necessary to carry out repetitive but essential maintenance tasks. The threat of cyber attacks means that responsible network administrators will change device passwords regularly. Technology innovations can have great benefits for your network and your company, but to take advantage of them you will need to update your device firmware. And in the worst case scenario, if your network suffers a failure, your support organization will need immediate access to the current configuration files and event logs of all your network devices.

Of course, for a small network, this can all be done by accessing each device individually. But for both small and large industrial networks, network security and high availability are the ultimate goals. MultiConfig™ can fulfill all the above requirements with a few clicks of a mouse. As a result, network administrators can meet their daily objectives with the least effort and minimal risk.

### Key benefits

- Highest network availability.
- Least effort required for network administration and maintenance.
- Minimized operational risk.



MultiConfig™ multiple device configuration



## Engineered through experience

Industrial HiVision v4.0 is the fourth generation network management software from Hirschmann™. We have built on our experience with previous releases to evolve a product which is unique in the industrial space. Industrial HiVision v4.0 encompasses all the features and benefits of earlier versions. These include:

- Client / Server architecture
- Web browser client
- Edit and Run modes
- Network hierarchy display
- Global and individual status display and propagation
- Flexible event handling
- Customizable data acquisition
- Long-term trending
- Comprehensive export functions
- Asset Management

## Thirty days free trial

As a network administrator, you need cutting edge tools to help you meet your targets. Hirschmann™ is famous for innovation. We are committed to evolving Industrial HiVision v4.0 to match our new hardware functionality, meet the requirements of our customers, and exceed the demands of the Industrial Ethernet marketplace.

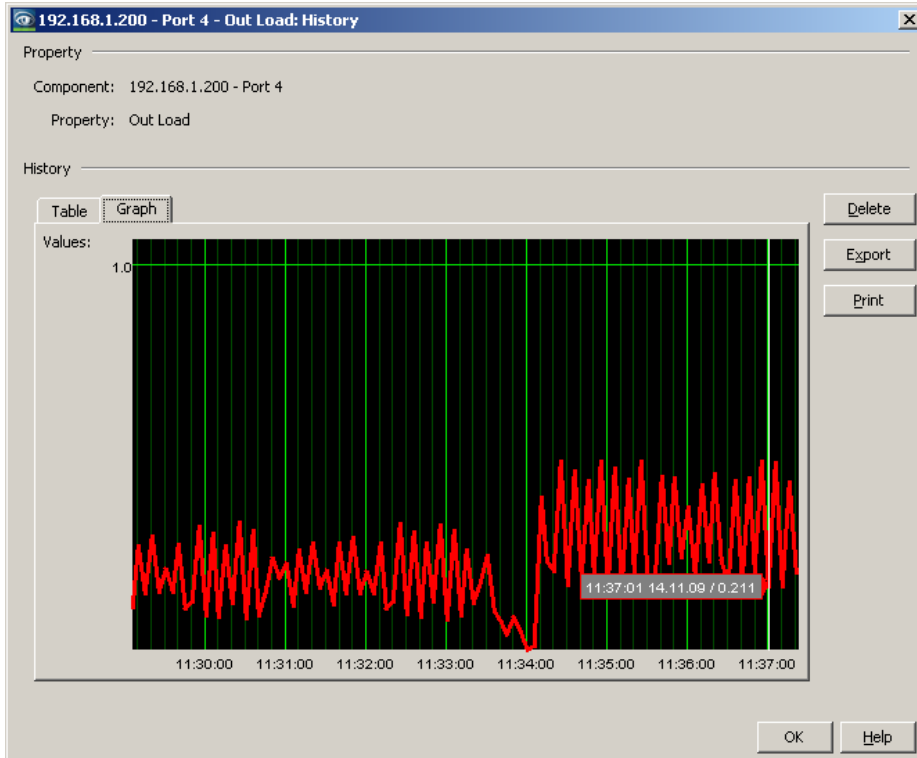
Everybody knows, seeing is believing. Words cannot do justice to network management software. Download Industrial HiVision v4.0, and test it free of charge for 30 days at your convenience. Of course, longer evaluation periods are available on request.

You can download Industrial HiVision v4.0 from: [www.hirschmann.com](http://www.hirschmann.com)

## Always the right solution

Belden is one of the world's leading suppliers of signal transmission solutions including cable, connectivity and active components for mission-critical applications ranging from industrial automation to data centers, broadcast studios, and aerospace. Belden offers an extensive and highly specialized product portfolio of signal transmission solutions for information, control and field levels, which the company produces and markets under its proprietary Belden®, Hirschmann™ and Lumberg Automation™ brands.

We would welcome the opportunity to tell you more about our extensive industry portfolio and Belden worldwide service. Further information and technical data are available online at [www.beldensolutions.com](http://www.beldensolutions.com). You can also contact our sales team directly by dialing +49 7127 14 1809.



Trending inside Industrial HiVision 4.0