



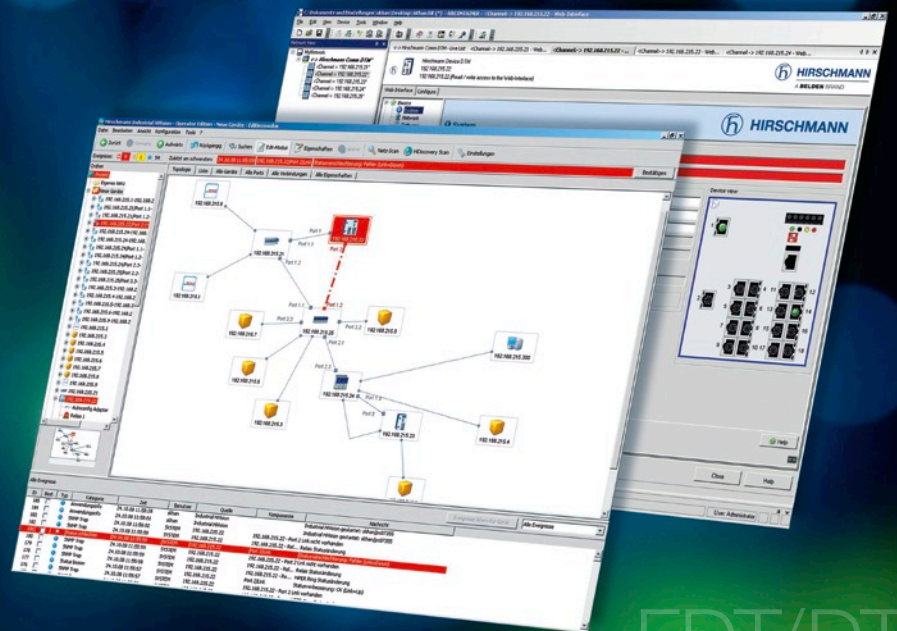
HIRSCHMANN

A **BELDEN** BRAND

Device Management Technology based on the FDT/DTM standard



FDT Standard



FDT/DTM

FDT Standard

NEW: intelligent, efficient FDT/DTM-compliant device management for the Hirschmann™ portfolio including switches, routers, firewalls and access points.



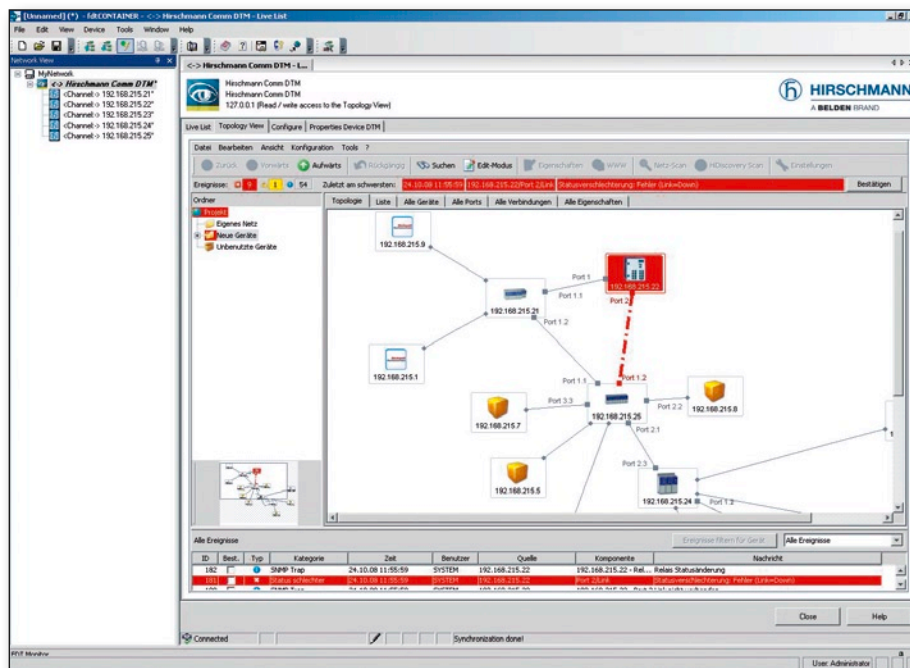
FDT Technology: The advantages of a standardized interface.

Freedom of choice

- Choose the best solution for your particular application without system integration limitations based on manufacturer or device type.
- Applies to all device types (probes, actuators, remote I/Os, drives, motor starters, Industrial Ethernet switches, etc.).
- The majority of manufacturers with a worldwide presence support FDT technology.
- Fewer software tools that offer better compatibility.
- FDT technology is also capable of meeting the complex future needs of automation system suppliers and end users.

User-friendly

- Easy access to device planning, commissioning, operator control, diagnostic and maintenance functions.
- Uniform device manager user interface (DTM).
- Full support for the complete range of device functions.



Unparalleled: Network-wide diagnostics using practical graphical representation of network topology. Ingenious embedding of Industrial HiVision into FDT technology supports an effective diagnostic strategy.

Central access to all field device data

- On-screen display showing all phases of the device lifecycle: engineering, ongoing operation, maintenance and asset management.
- Suitable for all sectors of the process and manufacturing automation industry (chemicals, pharmaceuticals, oil and gas, automotive, steel, etc).

Investment protection

- Fully supports all existing devices and communications protocols in the installed base.
- Best possible diagnostic functions.

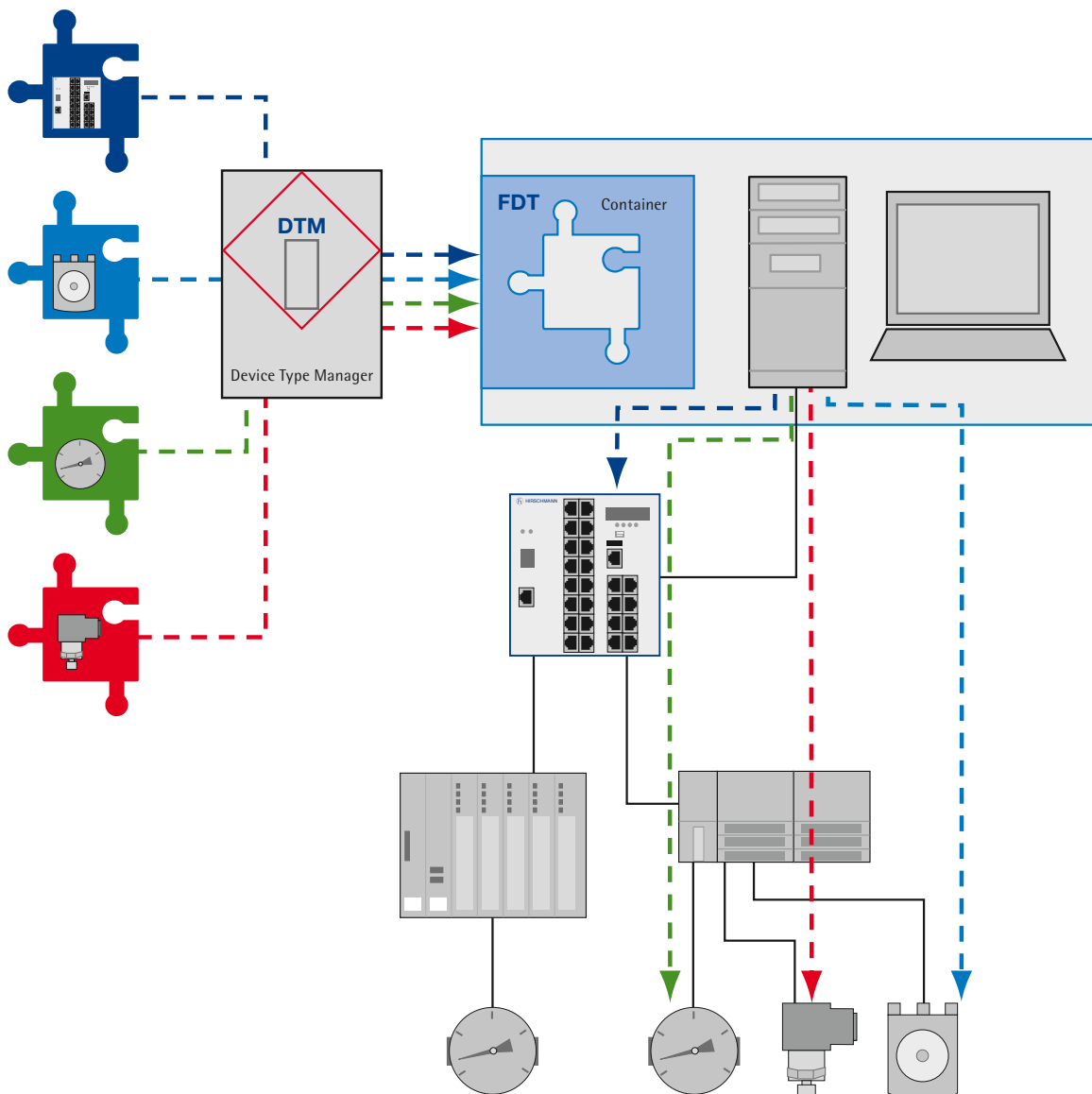
Reduction in total operating costs

- Reduction in the number of software tools needed per system.
- Reduced complexity when system faults occur.
- Reduction in engineering and training effort.

Continuous evolution in the network environment creates the need for new standards: Field Device Tool technology.

More and more intelligence is being designed into the actuators and sensors in today's automation networks, and users have access to an increasing number of configuration and diagnostic parameters. Data rates on current field bus systems can no longer cope with the traffic volume. Industrial Ethernet delivers data rates that are between 10 and 1000 times higher than those of existing field bus systems, and it is becoming increasingly popular in factory and process automation applications. There is an enormous variety of field bus protocols. Every device manufacturer uses a proprietary asset management system which has its own unique user interface, and in the past there have been no standards which define how the devices should be integrated into the user interface.

FDT technology (Field Device Tool) is the first standard which supports seamless display of device data in the user interface. It is compatible with any field bus protocol, device manufacturer or device type. New Device Type Management (DTM) makes the full potential of this technology available to Industrial Ethernet users. Belden with its Hirschmann™ and Lumberg Automation™ brands is the right partner for your application.





Developed by Hirschmann™ – certified by the FDT Group.

Hirschmann™ is an innovation leader, and it has played a pioneering role in Industrial Ethernet. The company is now the first manufacturer to introduce Device Type Management (DTM) for Industrial Ethernet. This tool enables the integration of switches and other infrastructure components into FDT systems to perform detection, configuration or diagnostics along with other field devices, e. g. actuators and sensors.

DTM technology enhances the existing configuration and diagnostic features of Hirschmann™ devices and makes it easier for users to create a detailed model of their network.

FDT/DTM offers crucial advantages to system suppliers and users, particularly in the process and manufacturing automation industries.



Note: the DTM is available free of charge on our web server at www.hirschmann.com. As a special service, our customers can download the DTM quickly and easily and integrate it into their existing systems.

Scope of delivery	
CommDTM	Scan LiveList, topology recognition
DeviceDTM	Device configuration call
Software requirement	
Operating system	Windows 2000/2003 Server/XP/Vista
FDT Frame application	fdtCONTAINER, FieldCare, Pactware, Yokogawa Fieldmate and the like
Hardware requirement	
Processor	x86 compatible CPU, min. 1 GHz
RAM	512 MB, 1 GB (recommended)
Hard disk space	500 MB free
Network	Ethernet network adapter with TCP/IP protocol stack
Supported devices	
Switch, router, firewall	RS20, RS30, RS40, MS20, MS30, OCTOPUS M, RSR, MACH100, MACH1000, MACH4000, EAGLE20
Topology recognition	
Industrial HiVision	from Version 3.1, please note additional license fee for Industrial HiVision





HIRSCHMANN

A BELDEN BRAND

www.hirschmann.com

GLOBAL LOCATIONS

For worldwide Industrial Sales
and Technical Support, visit:
www.belden.com/industrial



EUROPE

Headquarters – Germany
Hirschmann Automation and
Control GmbH
Phone: +49 7127 14-0
Fax: +49 7127 14-1542
INET-sales@hirschmann.de
web: www.hirschmann.com

Regarding the details in this brochure: The information/details in this publication merely contain general descriptions or performance factors which, when applied in an actual situation, do not always correspond with the described form, and may be amended by way of the further development of products. The desired performance factors shall only be deemed binding if these are expressly agreed on conclusion of the contract. Please note that some characteristics of the recommended accessory parts may differ from the appropriate product. This might limit the possible operating conditions for the entire system.