



HIRSCHMANN

A **BELDEN** BRAND

New Product Bulletin

NP 1015HE

The BAT Family

For maximum mobility, flexibility and network availability in today's industrial environments.



The New Extended BAT Family Includes a Broad Portfolio of Access Points and Clients That Work Seamlessly Together.

BAT Wireless Technology from Hirschmann™

To ensure maximum flexibility and network availability in industrial environments, wireless data transmission systems are being deployed to an increasing extent as the perfect complement to cable-based networks. The new technology creates opportunities to develop new mobile applications and reduce cabling and maintenance costs.

DIN Rail or Field-level Installation

The BAT family is the ideal solution wherever there is a need for high bandwidth, stable operation and tight network security. Hirschmann™ WLAN products deliver outstanding performance and maximum dependability even under extreme conditions in field-level applications. There are many scenarios where wireless systems are the ideal solution, for example to create a low-cost data link between cable cars and a valley or mountain station, to manage a fleet of forklift trucks or to keep permanent records of operational data for wind farm generators.

Whatever your particular needs might be, BAT technology from Hirschmann™, the pioneer in Industrial Ethernet, is your path to seamless networking.

Choose from the extensive portfolio of Hirschmann™ wireless products and get all the benefits of high operational reliability and investment security.

All BAT family products offer the following outstanding features:

- Rugged housing for installation on DIN rails, walls or poles, IP40 or IP65/67 ingress protection
- Extended temperature range: -30° C to at least +50° C
- Up to 2 built-in wireless interfaces which support all WLAN standards
- Up to 5 redundant power supplies with 24 VDC Power over Ethernet (IEEE 802.3af) and 12 V
- IEEE 802.11i with PSK, LEPS, 802.1x and RADIUS for maximum WLAN security







The BAT family products are ideally suited for:

- Harsh conditions in indoor and outdoor industrial applications where the units are exposed to moisture, cold or extreme heat
- Applications where high operational reliability and redundancy are a must
- Installations where the devices must meet very stringent EMC and noise immunity requirements
- High-security networks that offer segmentation and authentication in addition to basic WLAN functionality
- BAT-F X2 Access Points are easy to mount and handle due to the lightweight solution



The Full Range of Hirschmann™ WLAN Access Points and Clients at a Glance

BAT Family Data and Facts

Product Description			
	<p>BAT-Rail</p> <p>The devices are supplied in a metal enclosure for mounting on DIN rails in automation or vehicle applications.</p>	<p>BAT-F</p> <p>The devices are supplied in IP65/67 metal housings. They are designed for field-level applications or harsh industrial environments.</p>	<p>BAT-F X2</p> <p>The devices are supplied with stainless steel cover. They are designed for hazardous environment and are approved for ATEX zone 2.</p>
BAT54			
<p>These products support WLAN standards IEEE 802.11a/b/g/h, and operate at up to 108 Mbps (raw data rate)</p>			
	<p>BAT54-Rail</p> <ul style="list-style-type: none"> Industrial WLAN access point for installation on DIN rails Two IEEE 802.11a/b/g/h/i compliant WLAN interfaces 2x LAN/PoE, 2x24 V, 1x12 V power supply <p>BAT54-Rail Client</p> <ul style="list-style-type: none"> Industrial WLAN access client for installation on DIN rails One IEEE 802.11a/b/g/h/i compliant WLAN interface 1x LAN/PoE, 2x24 V, 1x12 V power supply <p>BAT54-Rail Single</p> <ul style="list-style-type: none"> Industrial WLAN access point for installation on DIN rails One IEEE 802.11a/b/g/h/i compliant WLAN interface 1x LAN/PoE, 2x24 V, 1x12 V power supply 	<p>BAT54-F</p> <ul style="list-style-type: none"> Industrial WLAN access point with IP65/67 enclosure Two IEEE 802.11a/b/g/h/i compliant WLAN interfaces 1x LAN/PoE, 2x24 V power supply <p>BAT54-F Client</p> <ul style="list-style-type: none"> Industrial WLAN access client with IP65/67 enclosure One IEEE 802.11a/b/g/h/i compliant WLAN interface 1x LAN/PoE, 2x24 V power supply <p>BAT54-F Single</p> <ul style="list-style-type: none"> Industrial WLAN access point with IP65/67 enclosure One IEEE 802.11a/b/g/h/i compliant WLAN interface, two PoE LAN interfaces 2 x LAN/PoE power supply 	<p>BAT54-F X2</p> <ul style="list-style-type: none"> Industrial WLAN access point with IP65/67 enclosure Two IEEE 802.11a/b/g/h/i compliant WLAN interfaces 1x LAN/PoE, 2x24 V power supply <p>Hirschmann™ states that all BAT-ANT antennas can be used in ATEX zone 2 in operation with the certified BAT-F X2.</p>
Part Numbers	<p>BAT54-Rail: 943 926-021 BAT54-Rail BG: 943 926-105 BAT54-Rail FCC: 943 926-022</p> <p>BAT54-Rail Client: 943 926-521 BAT54-Rail Client BG: 943 926-205 BAT54-Rail Client FCC: 943 926-522</p> <p>BAT54-Rail Single: 943 926-721 BAT54-Rail Single BG: 943 926-305 BAT54-Rail Single FCC: 943 926-722</p>	<p>BAT54-F: 943 959-112 BAT54-F BG: 943 959-212 BAT54-F FCC: 943 959-012</p> <p>BAT54-F Client: 943 959-117 BAT54-F Client BG: 943 959-217 BAT54-F Client FCC: 943 959-017</p> <p>BAT54-F Single: 943 959-116 BAT54-F Single BG: 943 959-216 BAT54-F Single FCC: 943 959-016</p>	<p>BAT54-F X2: 943 959-102 BAT54-F X2 BG: 943 959-202 BAT54-F X2 FCC: 943 959-002</p>
BAT300			
<p>These devices support WLAN standards IEEE 802.11a/b/g/h/n and IEEE 802.11n, and they operate at up to 300 Mbps (raw data rate)</p>			
	<p>BAT300-Rail</p> <ul style="list-style-type: none"> Industrial WLAN access point for installation on DIN rails One IEEE 802.11a/b/g/h/n/i compliant WLAN interface 2x LAN/PoE, 2x24 V, 1x12 V power supply 	<p>BAT300-F</p> <ul style="list-style-type: none"> Industrial WLAN access point with IP65/67 enclosure One IEEE 802.11a/b/g/h/n/i compliant WLAN interface 1x LAN/PoE, 2x24 V power supply 	<p>BAT300-F X2</p> <ul style="list-style-type: none"> Industrial WLAN access point with IP65/67 enclosure One IEEE 802.11a/b/g/h/n/i compliant WLAN interface 1x LAN/PoE, 2x24 V power supply
Part Numbers	<p>BAT300-Rail: 943 989-001 BAT300-Rail BGN: 943 989-105 BAT300-Rail FCC: 943 989-101</p>	<p>BAT300-F: 943 959-118 BAT300-F BGN: 943 959-218 BAT300-F FCC: 943 959-018</p>	<p>BAT300-F X2: 943 959-308</p>
Accessories			
Serial auto-configurations adapter	ACA 11 – miniDIN (Part No.: 943 973-001)	ACA 11 – M12 (Part No.: 943 972-001)	ACA 11 – M12 (Part No.: 943 972-001)
Mounting	–	BAT-F Mounting Kit (Part No.: 943 966-001)	BAT-F Mounting Kit (Part No.: 943 966-001)



WLAN Management Keeps You in the Picture

An extensive software portfolio is available to help you get the most from your Hirschmann™ BAT products and manage your WLAN intelligently and efficiently in an industrial environment.

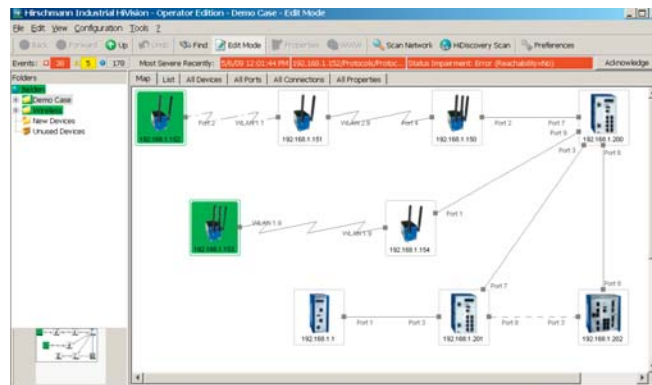
Hirschmann™ Industrial HiVision:

- Seamless LAN and WLAN network management

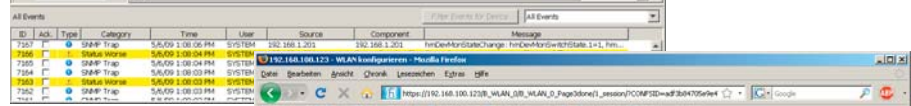
All BAT products are supplied with the following items and features at no extra cost:

- Windows Management Suite: LANconfig, LANmonitor, WLANmonitor
- Direct web browser based management (HTTP, HTTPS)
- Command line interface: Telnet or serial port
- Remote configuration via serial or DSL modem
- Scripting for partial configuration of multiple devices
- WLANmonitor for user-friendly WLAN monitoring, includes Rogue Access Point Detection

All of these features support simple, straightforward commissioning, configuration, monitoring, device and network state diagnostics and network attack detection.



Industrial HiVision continuously shows the current connection status for all devices that are attached to the WLAN.

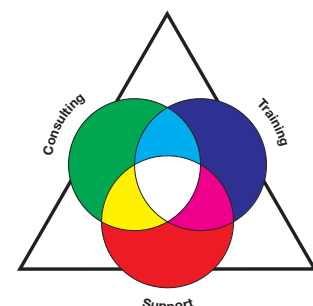


The integrated, user-friendly operating software guides the user step-by-step through the WLAN configuration process.

Belden® Competence Center

Design your network as a cost-efficient total solution. Besides all of the connectivity products that you would expect, Hirschmann™ also offers an extensive range of manufacturer-independent services. Our consultants have the right tools and experience to design secure WLAN networks that meet your specific needs.

Besides training on our WLAN products, we offer manufacturer-independent technology training which addresses all aspects of WLAN deployment and operation. Our technical support team can conduct pre- and post-installation surveys to ensure that your WLAN delivers maximum availability and performance. Why not put together your own individual service package today?





Belden Covers all the Bases

Belden is one of the world's leading suppliers of signal transmission solutions including cable, connectivity and active components for mission-critical applications ranging from industrial automation to data centers, broadcast studios, and aerospace. Belden offers an extensive and highly specialized product portfolio of signal transmission solutions for information, control and field levels, which the company produces and markets under its proprietary Belden®, Hirschmann™ and Lumberg Automation™ brands.

Belden has now expanded the Hirschmann™ product line with its BAT family of industrial networking products to meet current customer needs and enhance its leadership position in the high-availability WLAN solutions market. The Hirschmann™ product portfolio, which is backed up by a wealth of applications expertise, now includes WLAN solutions.

We would welcome the opportunity to tell you more about our extensive industry portfolio and Belden worldwide service. Further information and technical data are available online at www.beldensolutions.com. You can also contact our sales team directly by dialing +49 (0) 7127/14-1809.

WLAN Connecting Options with BAT Family

