

Ethernet Product Summary

Managed Switches & Routers

- Web interface for easy and secure configuration
- IT-compatible (SNMP, RMON, & CLI plus Cisco interoperability)
- EtherNet/IP and Profinet industrial profiles allow configuration and monitoring via PLC. Parameters/diagnostics can be displayed.
- Media redundancy (HiperRing, RSTP, & Link Aggregation/Trunking) with <50ms recovery for 50 switch ring
- USB port for "computer-less" switch backup, recovery, configuration and "copy-cat" functions
- Configurable fault contact for monitoring status of power, redundancy, temperature, and links
- Security (port-based by IP/MAC address or IEEE 802.1x)
- Routing/layer 3 switching functionality available
- DIN-rail or 19" rack mounting
- Available with gigabit, fiber, and/or M12 micro ports, industry approvals (substation & railway), Power over Ethernet (PoE), & extended temperature range
- Configure a demo switch online and download a quick-start guide at www.ethernetsafari.com



RAIL (RS20 / RS30 / RS40): Compact switch with 4, 8, 16, or 24 10/100 Mbit ports plus 2 optional gigabit ports or 9 gigabit ports (fiber or copper)

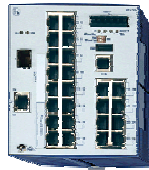
MICE (MS20 / MS30) / PowerMICE: Modular switch with up to 24 10/100 Mbit ports and up to 4 gigabit ports (2, 4, or 6-slot backplane with hot-swappable media modules). Available with layer 3 switching/routing. Choose from over 20 media modules.

MACH 1000: Ruggedized modular 19" rack-mounted switch with 24 10/100 Mbit fiber/copper ports + 2 gigabit ports. Meets substation and railway approvals (IEC61850, -40 to +85°C, 24-320VDC redundant power)

MACH 4000: Modular 19" rack-mounted switch/router with up to 48 10/100/1000 Mbit copper or fiber ports (10Gbit & PoE also available)

OCTOPUS 8M / 16M / 24M: IP67/Washdown "On-Machine" 8/16/24-port switches; M12 ports

ACA21-USB: USB auto-configuration adapter



Why Hirschmann? Businesses rely on Ethernet networks to provide communication between computers and other intelligent devices. Office-grade Ethernet equipment provides the benefit of standards-based communication, but cannot provide the reliability that **harsh** or **mission critical** applications require.

Hirschmann's **ruggedized** equipment helps customers maximize the availability of their networks whether their needs are wired, wireless, security, or network diagnostics.

Our customers benefit from the peace of mind & long-term cost savings provided by using Hirschmann equipment.

Unmanaged Switches

DIN-rail mounted, 0-60°C, 24 VDC, "Plug & Play", auto-crossing, auto-negotiation. Available with up to 3 fiber ports, extended temperature, & approvals.

SPIDER family: Compact, low cost, industrial media converters and 3, 5 & 8-port switches

RAIL family: available with 4 to 24 ports, redundant power inputs, and fault contact



Wireless

BAT 54 RAIL: IEEE 802.11a/b/g, dual radios, 5-way redundant power, PoE (Power over Ethernet), security (WEP, WPA, 802.1x & 802.1i), 8 SSIDs, fast roaming



Security

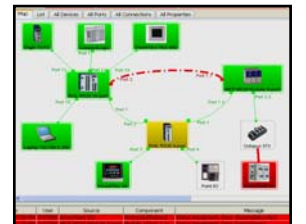
EAGLE: Firewall, VPN, router, anti-virus, 1:1 NAT, DHCP server, DIN-Rail mounted, 24 VDC redundant inputs, web interface, USB port, SNMP, 0-55°C.



Network Management

Industrial HiVision: Network visualization & monitoring (cable breaks/utilization) with auto-topology and SCADA integration

HiVision: SNMP network management (remote monitoring & multi-switch configuration)



Workgroup Switches & Routers

Suitable for *standard-duty* applications: 19" rack mount, RSTP, web interface, SNMP, multicast filtering, 100-240 VAC, 0-40/50°C.

LION 24TP: 24-port switch with optional gigabit uplinks

SmartLION: 24-port modular switch with copper & fiber modules

GigaLION: 24-port gigabit switch

PowerLION: 24-port gigabit layer 3 switch/router



Hirschmann Automation and Control
(717) 217-2200

For detailed product information refer to
Industrial Ethernet Catalog Edition 4
or www.hirschmann-usa.com